



Fighting against COVID-19

Caring for Pregnant Women & Newborns



Dr. Song Li

Deputy Director General (DDG)
Department of Women & Children health
National Health Commission of China



Ensuring the safety of mothers



Giving priority to children

Three key points

- 1. Timely releasing national policies and technical guidelines on COVID-19 prevention and management among pregnant women and children**
- 2. Optimizing the operation of MCH service system to adapt the changing situation during the outbreak**
- 3. Strengthening provision of maternal and child health services through different channels and platforms**

1. Timely release national policies and technical guidelines on COVID-19 prevention and management among pregnant women and children

- *“Notice on how to prevent and manage infected pregnant women and children during the outbreak of COVID-19”*
- *“Notice on strengthening management of pregnant women and ensuring safety of motherhood during the outbreak of COVID-19”.*

关于做好儿童和孕产妇新型冠状病毒感染的肺炎疫情防控工作的通知及解读

健康中国 2月2日



关于做好儿童和孕产妇新型冠状病毒感染的肺炎疫情防控工作的通知
肺炎机制发〔2020〕17号

关于加强新型冠状病毒肺炎疫情防控期间孕产妇疾病救治与安全助产工作的通知及解读

健康中国 2月8日

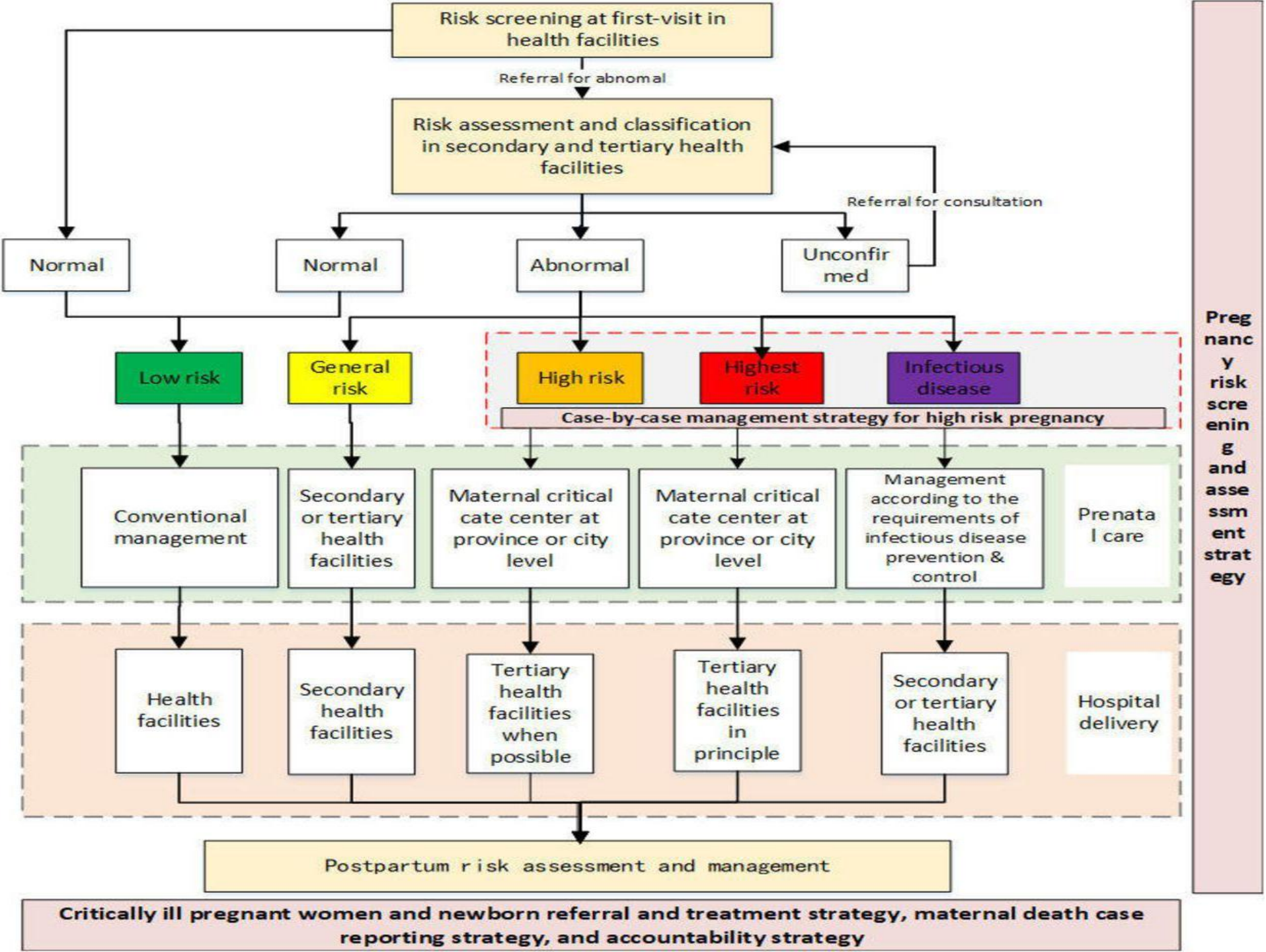


关于加强新型冠状病毒肺炎疫情防控期间孕产妇疾病救治与安全助产工作的通知
肺炎机制发〔2020〕25号

2. Optimize the operation of MCH service system to adapt the changing situation during the outbreak

Based on experiences generated across the country over the last few years, Strategy to Ensure Maternal and Infant Safety was developed and released by the central government, which including five key approaches, which were,

- 1) screening and assessment of risk of pregnancy
- 2) systematic management of high-risk pregnant women
- 3) management of near-miss pregnancies
- 4) case reporting of individual maternal death
- 5) accountability of maternal and infant safety



- During the outbreak of COVID-19, we further optimized the operation of MCH system so that the fast-changing situation during the outbreak is well adapted, and more targeted services were provided to pregnant women and newborns.
- For low-risk pregnant women, they were advised to adjust their schedule for antenatal care visits, and consult with their doctors on how to protect themselves and conduct health monitoring at home.
- For pregnant women with complications, suggestions were provided on how to conduct antenatal care visits as scheduled, and under what situation they should go to hospitals.
- For pregnant women with confirmed COVID-19 infection, all should follow the protocol of management of pregnant women with infectious diseases.

- In order to ensure timely detection and treatment of infected pregnant women, a service provision system for screening, diagnosis and treatment of pregnant women with COVID-19 was established based on the existing MCH system.

妇幼健康司

[网站首页](#) | [首页](#) | [最新信息](#) | [政策文件](#) | [工作动态](#) | [关于我们](#) | [图片集锦](#) | [专题专栏](#)

动态

您现在所在位置: [首页](#) > [最新信息](#) > [综合管理](#) > [动态](#)

各省（区、市）新型冠状病毒感染疑似或确诊孕妇产检和住院分娩定点医院 （截至2020年2月19日）

发布时间：2020-02-20 来源：妇幼健康司



省份	总数	省级		地市级		县区级	
		名单	数量	名单	数量	名单	数量



头条 @甘肃农村广播

@祖国日报

3. Strengthening provision of maternal and child health services through different channels and platforms

- In response to the physical and psychological characteristics of pregnant women during the outbreak of COVID-19, health facilities were required to providing more support on antenatal care and mental health, which were done through various channels, such as online consultation, WeChat and other social media APPs, hotline, and video.

中国妇幼健康 >

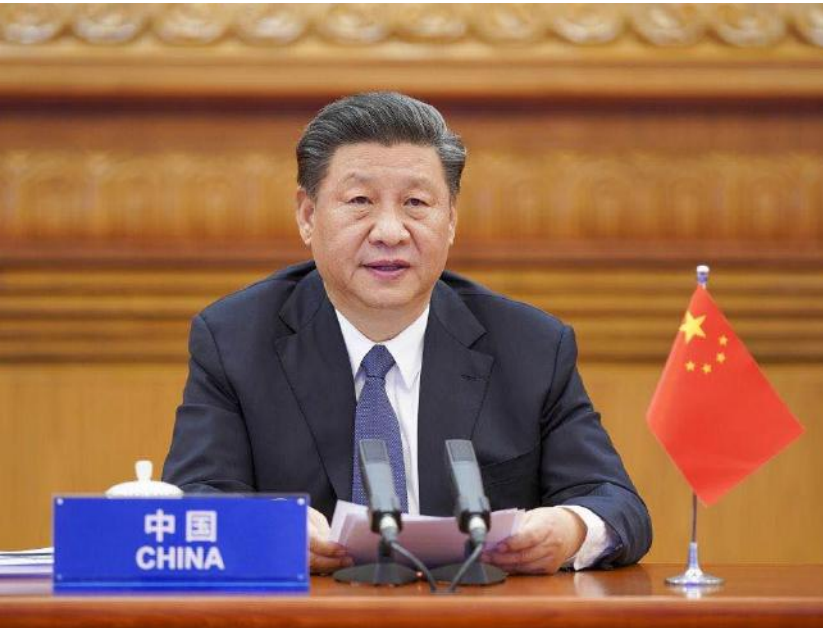
免费获得产科、妇科和儿科问诊，让就医更便捷、更安全。



- Health facilities were requested to set up separate route for antenatal care clinics and obstetric wards so as to minimize the risk of infection of pregnant women.
- Expert groups composed of obstetricians, pediatricians, physicians specialized in respiratory, infectious diseases and ICU were established in all areas across the country, and they participated the management of near-miss pregnancies with COVID-19 infection.
- For newborns of women with confirmed infection, isolation and specific newborn care were required, and newborns under severe condition were requested to be referred to designated hospitals for further treatment.



"It is imperative for the international community to strengthen confidence, act with unity and work together in a collective response to the outbreak."



众志成城
抗击疫情



我们
在
一起
Together
we are

